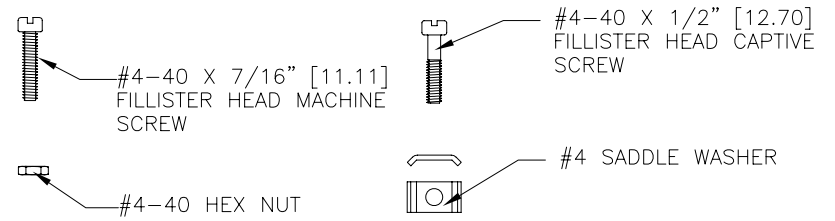
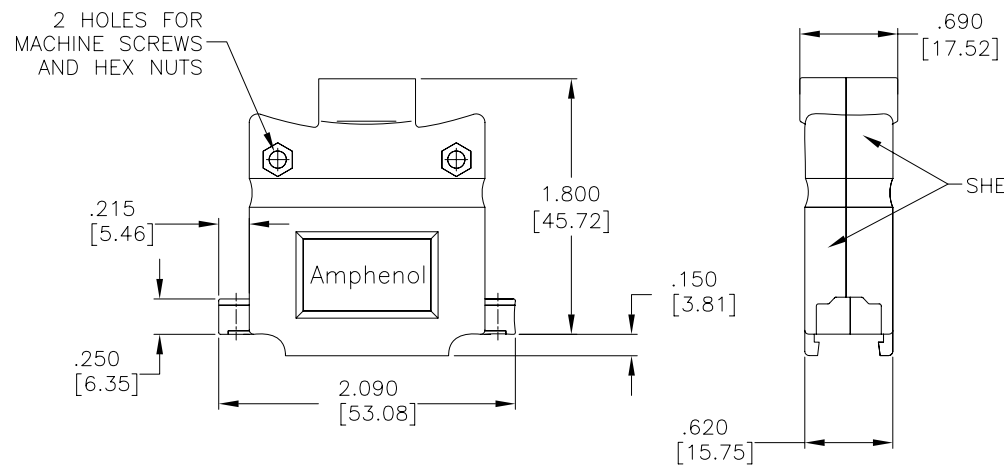
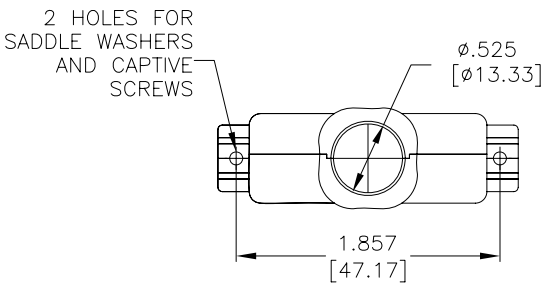


| REVISIONS |                             |          |        |
|-----------|-----------------------------|----------|--------|
| REV       | ECN, ERN NO.                | DATE     | APPRD. |
| A         | PRODUCT DRAWING (EAR 13158) | OCT23/07 | K.L.   |

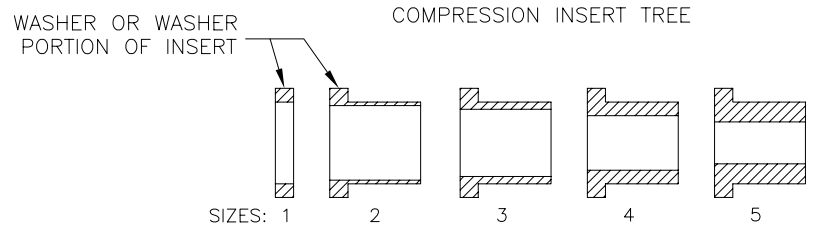
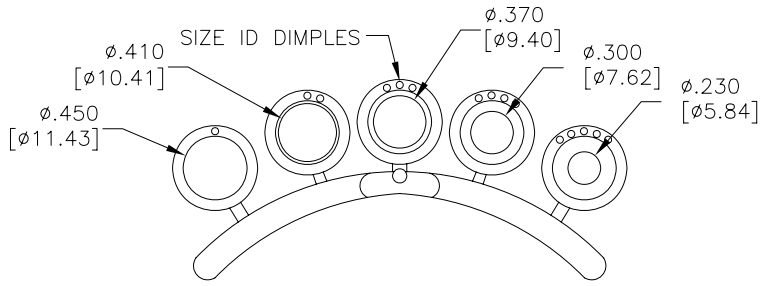


NOTES:

- 1.EACH BACKSHELL KIT CONTAINS 2 SHELL HALVES, 1 COMPRESSION INSERT TREE AND 2 OF EACH HARDWARE ITEM SHOWN.
- 2.BACKSHELL IS SUITABLE FOR SUBMINIATURE D CONNECTOR, B SIZE SHELL (25 POSITION STANDARD CONTACTS OR 44 POSITION HIGH DENSITY CONTACTS).
- 3.COMPRESSION JACKET INSERTS ARE DESIGNED FOR A CABLE DIAMETER RANGE OF .230 [5.84] TO .450 [11.43].
- 4.MATERIALS - ALL MATERIALS ARE RoHS COMPLIANT  
SHELL - ZINC ALLOY, ZINC PLATED, HEXAVALENT CHROMIUM FREE FINISH.  
INSERT TREE - BLACK THERMOPLASTIC, 75 DUROMETER  
HARDWARE - STEEL, ZINC PLATED, HEXAVALENT CHROMIUM FREE FINISH

ASSEMBLY INSTRUCTIONS:

- 1.SELECT THE TIGHTEST INSERT THAT WILL FIT OVER THE CABLE, AND FEED THE CABLE THROUGH IT, PLACING THE END WITH THE SMALLER OD (THE END WITHOUT THE WASHER) TOWARDS THE CONNECTOR.
- 2.TERMINATE THE CABLE WIRES TO THE CONNECTOR.
- 3.CUT THE JACKET, FOLD THE SHIELDING BACK OVER THE OUTSIDE OF THE INSERT AND CUT IT JUST SHORT OF THE WASHER.
- 4.INSTALL SADDLE WASHERS, CAPTIVE SCREWS AND CONNECTOR.
- 5.PLACE THE WASHER IN OUTERMOST DEPRESSION IN CABLE EXIT AREA OF THE BACKSHELL AND SCREW SHELL HALVES CLOSED.



AMPHENOL PART NUMBER 17E-1657-25

|                               |  |                    |  |  |  |              |  |
|-------------------------------|--|--------------------|--|--|--|--------------|--|
| DRAWN J. WOOD                 |  | DATE SEP28/07      |  | Amphenol Canada Corp.  |  |              |  |
| DESIGNED                      |  |                    |  |  |  |              |  |
| CHECKED K. LAMBIE             |  | OCT23/07           |  | 17E SERIES METAL BACKSHELL FOR D-SUB CONNECTOR WITH B SIZE SHELL (25 STD OR 44 HD CONTACTS), STRAIGHT EXIT, #4-40 THREAD, RoHS COMPLIANT |  |              |  |
| I. E. APPRD.                  |  |                    |  | DWG. DRAWING NO.   |  | REV.         |  |
| Q. A. APPRD.                  |  |                    |  | B  |  | A            |  |
| DWG. APPRD.                   |  |                    |  | P-17E-1657-25  |  |              |  |
| ENG. REL. NO. EAR 13158       |  | DWG. REF.          |  | SCALE 1.25/1   |  | WT. -----    |  |
| DIMENSIONS ARE IN INCHES [mm] |  | CODE ID. NO. 03554 |  | SURF. -----  |  | SHEET 1 OF 1 |  |

THIS DOCUMENT CONTAINS PROPRIETARY INFORMATION AND SUCH INFORMATION MAY NOT BE DISCLOSED TO OTHERS FOR ANY PURPOSE OR USED FOR MANUFACTURING PURPOSES WITHOUT WRITTEN PERMISSION FROM AMPHENOL CANADA CORP.